

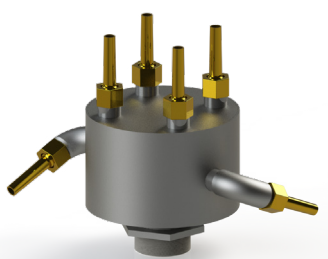
AquaSPIN

Dancing in Water Cycles!



The spiral movement of AquaSPIN provides a unique effect that cannot be achieved through any axial action. There are two different types available. These products vary in several aspects, such as the type of water inlets, the number of nozzles, and the maximum water height. This variety offers a wide range of options, allowing you to choose the product that best meets your needs. AquaSPIN's innovative design ensures optimal water distribution, enhancing both functionality and aesthetic appeal.

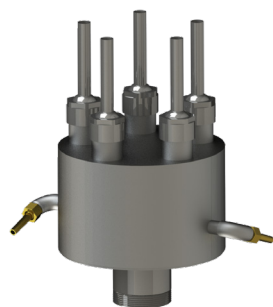
With advanced technology and user-friendly features, AquaSPIN not only delivers superior performance but also promotes water conservation. By precisely controlling water flow and distribution, AquaSPIN helps reduce water wastage, making it an environmentally friendly option. AquaSPIN's various types and customizable features provide the flexibility to choose the perfect solution for your specific requirements.



AquaSPIN I



AquaSPIN II



AquaSPIN III

- ✓ Robust Stainless Steel Body
- ✓ Synchronom Dependence library available
- ✓ AquaLIGHT x 3 Optional
- ✓ Nozzle quantity x 4 or x 6
- ✓ Rotating screw- shaped water pattern



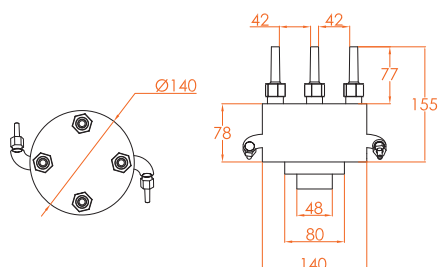
TECHNICAL DETAILS

MODEL : AquaSPIN I
DIMENSION(ØxH) : 140x155 mm
MATERIAL : Stainless Steel
MAX. HEIGHT : 3 m
DMX CONNECTION : Combo Cable
WATER INLET : 1 ½" NPT
WATER OUTLET : 4x10- Ø10
WEIGHT : 8 kg
PRODUCT NO : 1200

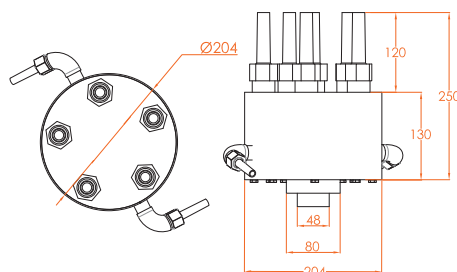
MODEL : AquaSPIN II
DIMENSION(ØxH) : 204x250 mm
MATERIAL : Stainless Steel
MAX. HEIGHT : 5 m
DMX CONNECTION : Combo Cable
WATER INLET : 2" NPT
WATER OUTLET : 6x10 - Ø14
WEIGHT : 9 kg
PRODUCT NO : 1201

MODEL : AquaSPIN III
DIMENSION(ØxH) : 254x370 mm
MATERIAL : Stainless Steel
MAX. HEIGHT : 10 m
DMX CONNECTION : Combo Cable
WATER INLET : 3" NPT
WATER OUTLET : 5 x Ø17
WEIGHT : 10 kg
PRODUCT NO : 1202

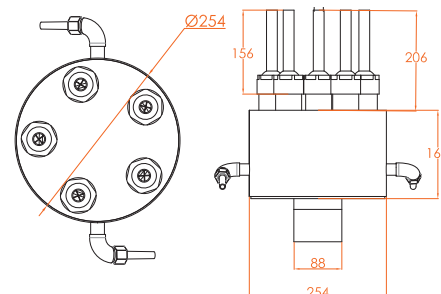
AquaSPIN I



AquaSPIN II



AquaSPIN III



NOZZLE TYPE	AquaSPIN I		AquaSPIN II		AquaSPIN III	
	HEIGHT	I/MIN	BAR	I/MIN	BAR	I/MIN
1.00 :	95	0.56	270	0.81		
1.50 :	120	0.84	345	1.20		
2.00 :	140	1.16	405	1.50		
2.50 :	156	1.48	452	1.86		
3.00 :	172	1.80	501	2.23	647	1.75
3.50 :			542	2.70	665	2.05
4.00 :			580	3.00	687	2.35
5.00 :			645	3.80	765	2.95
6.00 :					837	3.55
7.00 :					885	4.01
8.00 :					962	4.65
9.00 :					1017	5.30
10.00 :					1070	5.90

COMPATIBLE ELEMENTS AND ACCESSORIES

PRODUCT GROUP	SEE
Nozzles :	Accessory nozzles
Connection :	Connection accessories
Controlling :	Control accessories
Holder and Stand :	Holder and Stand Accs.
Lighting :	Lighting Series