

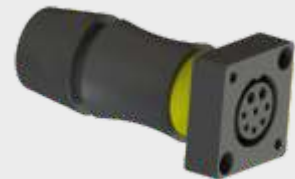
End Terminal

Each device are controlled by DMX. However there are some negative effects on the signal quality such as; device number and gap between two devices. That's why, we divide the system in to the sub-control line. It is way which we apply to protect the signal quality of DMX, especially in huge projects. We usually use same DMX signal for 20-25 units. We are using End Terminal to end the line.



Bypass Terminal

With our marine cable system which has 2 Data line in it, same DMX follows all device line (Max:25) In any case of removing a device in the system, Bypass Terminal should plug in the male device socket which comes from Power Box and feeds the removed device. This process have to do for protect the DMX.



Device Sockets

There are two types of device socket. All Device have Female device socket whilst Power Boxes have male Device Socket. With male and female socket connetion, device receives Power & DMX and same DMX goes back to Power BOX, then the next device in the line.



CAUTION : PLUGING SOCKETS

BE SURE THAT RED O-RING IN MALE SOCKET, EXISTENCE AND UNDAMAGED CLEN THE SURFACE WHICH TOUCHES THE O-RING BOTH SOCKETS SHOULD BE DRY TIGHTEN THE SCREWS VERY WELL



Connection Schematic

